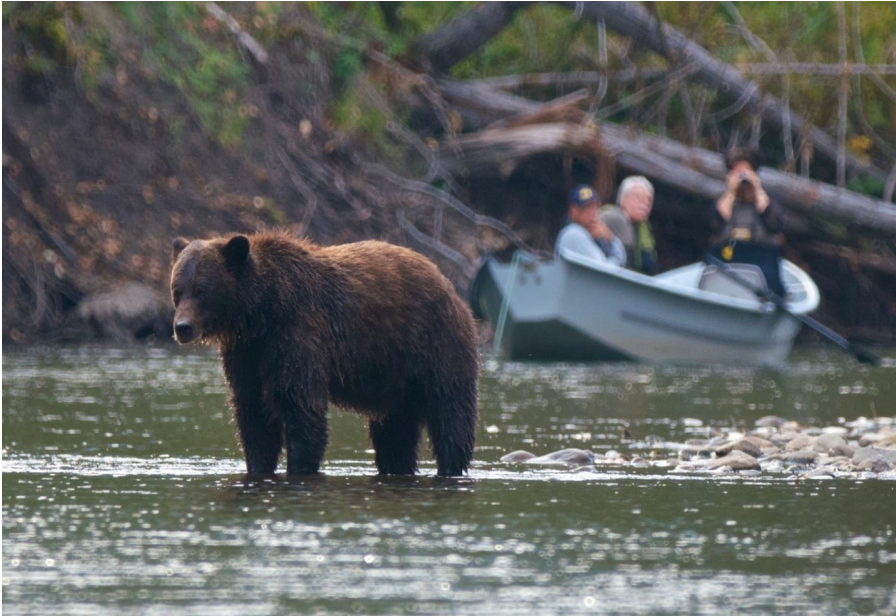


*Full Itinerary*

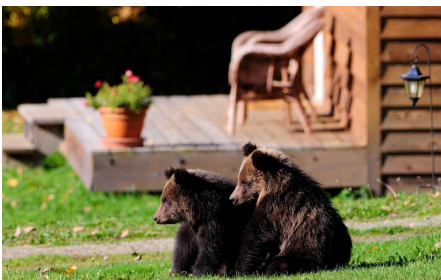
## CANADIAN GRIZZLY BEAR ADVENTURE.



TALK TO OUR WELL TRAVELLED TEAM OF EXPERTS

Toll Free US and Canada: 1 (855) 342-4127

Office open: Monday - Thursday 9:00am - 8:00pm, Friday 9:00am - 5:30pm (London time). Call answered 24/7



### JOURNEY SNAPSHOT

**ACTIVITY LEVEL:**

Level 2

**DESTINATION:**

Canadian Grizzly Bear Adventure

**DURATION:**

9 days, 8 nights

**FLIGHT INFORMATION:**

Price excludes international flights into Vancouver International Airport [YVR] Day 1 and departing from Vancouver International Airport [YVR] on Day 9

**PICKUP LOCATION:**

Vancouver International Airport [YVR]

## OVERVIEW

Choose your own departure date for your group.

Award-winning Grizzly Bear Adventure, where luxury meets wilderness with your own private chalet.

Bella Coola, British Columbia, Canada – the perfect place to be when the local rivers, host to teeming numbers of returning salmon, draw lots of grizzlies hoping to fatten up for the coming winter. This is when we'll be there to watch the grizzly bears! When they are so focussed on fishing, the bears are much easier to observe. Accompanied by an experienced and knowledgeable guide, our drift trips are the perfect way to see the bears and wildlife of the Bella Coola valley.

The McKenzie River boats are non-motorized and therefore don't disturb the bears in their natural habitat. The leisurely pace and silence offer a relaxed and peaceful way to travel the valley, as well as a completely unique opportunity for viewing wildlife up close and personal- on some occasions, our guests see up to 15 different grizzly bears in a single float. Join us as we explore the ancient Great Bear Rainforest in the company of a local guide whilst staying in private chalets at the award-winning Tweedsmuir Park Lodge. Before we fly up to Bella Coola on our wilderness adventure, we meet first in Vancouver for a couple of nights to explore this bustling city.

## ITINERARY SUMMARY

**DAY 1** - Arrival in Vancouver

**DAY 2** - Vancouver Sightseeing

**DAY 3** - Bella Coola - River Drift looking for bears!

**DAY 4** - Guided Nature Walk & Afternoon drive

**DAY 5** - River Drift on the Atnarko in the morning, Guided Nature Walk in the afternoon

**DAY 6** - Full Day Valley Tour

**DAY 7** - River Drift in the morning. Guided Nature Walk in the afternoon

**DAY 8** - Bella Coola to Vancouver

**DAY 9** - Farewell from Vancouver

## FULL ITINERARY

### DAY 1 - ARRIVAL IN VANCOUVER

Upon arrival at Vancouver International Airport you will be met at the airport and transferred directly to the hotel. The remainder of the day is at leisure and to meet your Big Journey Company Tour Director. Our hotel is in the heart of downtown Vancouver. Some nearby attractions are Stanley Park, Vancouver Aquarium and a host of restaurants, museums and galleries. On-site amenities include the restaurant, bar, a health club and indoor pool.

**Included meals:** none

### DAY 2 - VANCOUVER SIGHTSEEING

After breakfast at the hotel we head out on an orientation tour to see the sights of Vancouver: Granville Mall, Canada Place cruise ship terminal, Robson Street, Chinatown and historic Gastown, city centre and financial district, Granville Island as well as Stanley Park with totem poles, Prospect Point, Lions Gate Bridge and English Bay beaches. The tour includes admission to FlyOver Canada which is an amazing virtual flight ride in which you will "take off" into a huge domed screen to enjoy a breath-taking flight across the country.

This afternoon we'll go on a waterfront sightseeing adventure. We'll begin by cruising along the Vancouver Inner Harbour, then soaring up to 55 Km/h as we cross the Burrard Inlet. Along the way our experienced, qualified and passionate skippers will provide a fascinating array of information, highlighting the sights of Vancouver's Coal Harbour, Northshore, English Bay, False Creek and many more. We enjoy a Welcome dinner together this evening.

**Included meals:** Breakfast & Dinner

### DAY 3 - BELLA COOLA - RIVER DRIFT LOOKING FOR BEARS!

Full breakfast at leisure at the hotel. Direct transfer to Vancouver International Airport South Terminal. Check-in with Pacific Coastal Airlines for the flight to Bella Coola, flight duration approximately 1 hour. The plane departs at 10:30 and arrives in Bella Coola at 11:40. On arrival, our staff will greet you and transfer you the 45 minutes to the lodge, highlighting points of interest along the way. After check-in, your holiday will start with a lodge orientation and an informative bear awareness seminar.

Your bear viewing commences with a late afternoon River Drift down the Atnarko River. Relax and enjoy the amazing mountain scenery.....and keep your eyes open for wildlife! The salmon are spawning and provide an easy meal for majestic bald eagles and impressive grizzly bears. River otters and black bears may also be seen. Small Group River Drift Bear Viewing is a unique experience only found at Tweedsmuir Park Lodge and is the best way to see grizzlies. The bears are busy fishing and ignore your presence, allowing you to see them at their most natural. It's also a great way to capture amazing photographs. The bears aren't the only ones who will be feasting on a delicious meal; you will too, with a scrumptious 3 course dinner back at the lodge! Dinner is at 7:00pm every night.

**Included meals:** Breakfast, Lunch & Dinner

### DAY 4 - GUIDED NATURE WALK & AFTERNOON DRIVE

Wake up early and wander down to the Wildlife Viewing Station, which is for the exclusive use of Tweedsmuir Park Lodge guests. Early morning is a great time to spot bears and the raised structure provides open lines of sight both up and down the river. After checking out the station you have a choice of a hot or continental breakfast, which is held every day at 8am. Afterwards, it's time to head out for a Guided Nature Walk in the old growth forests of Tweedsmuir Park, the largest provincial park in British Columbia. Your guide, a naturalist, will show you how to track the bears and will point out various bear signs, including rub trees with claw and bite marks, and places the bears dig out in the forest floor for their naps called day beds. A picnic lunch will be served in the field. In the afternoon, continue exploring the park with a drive on the Tote Road past old, abandoned homesteads brimming with character. This is prime bear habitat and sightings are common. At the end of the road there is a short, highly recommended hike to Stillwater Lake. This is a beautiful, pristine place that should not be missed! You will arrive back at the lodge in the late afternoon. Now you can relax and enjoy some hors d'oeuvres on the sun deck of the lodge, exchanging stories of wildlife seen with your fellow guests. Make sure to head back to the Wildlife Viewing Station before dinner.

**Included meals:** Breakfast, Lunch & Dinner

### DAY 5 - RIVER DRIFT ON THE ATNARKO IN THE MORNING, GUIDED NATURE WALK IN THE AFTERNOON

Check out the Wildlife Viewing Station before breakfast. Then it's time to hit the river with your personal guide for a morning River Drift on the Atnarko in search of more bears! The bears are most active in the morning and evening and it's a great time to enjoy a quiet float. A nutritious lunch will be served at the lodge before you head off with your guide to further explore Tweedsmuir Park. Our knowledgeable and friendly guides know the area well and have mapped numerous short hikes to superb vantage points overlooking the Atnarko River to see spawning salmon...and the bears and eagles fishing for them!

**Included meals:** Breakfast, Lunch & Dinner

## DAY 6 - FULL DAY VALLEY TOUR

The Bella Coola valley is an extraordinary place with fantastic geography, pristine ecosystems and a rich First Nations heritage. This day will take you down valley to see the culturally modified ancient cedar trees, the totem poles and the petroglyph gardens. Lunch will be a picnic at Clayton Falls Park overlooking the fjord. This is also your opportunity to visit the Bella Coola town site and to shop at the art gallery for First Nations jewellery and masks.

**Included meals:** Breakfast Lunch & Dinner

**Optional extras:** Optional helicopter sight-seeing tour - If you are feeling adventurous and would love to see Bella Coola from the Bald Eagles' point of view, then why not join us for an optional helicopter sight-seeing tour of the mountains surrounding the Bella Coola Valley (weather permitting)? The towering peaks and glaciers are some of the most stunning in all of British Columbia and will leave you inspired.

## DAY 7 - RIVER DRIFT IN THE MORNING. GUIDED NATURE WALK IN THE AFTERNOON

Similar schedule as Day 5; begin your day with a morning River Drift on the Atnarko. In the afternoon your guide head out on a Nature Walk to explore the park. It's our last full day and one more chance to look for grizzly bears!

**Included meals:** Breakfast, Lunch & Dinner

## DAY 8 - BELLA COOLA TO VANCOUVER

We recommend one last visit to the Wildlife Viewing Station before your final breakfast in Bella Coola. Check-out is 11am so you can take advantage of a leisurely morning in which you can enjoy the lodge property, make use of the spa and gym, play some lawn games, or simply relax before taking our shuttle back to the Bella Coola Airport for the flight back to Vancouver.

On arrival in Vancouver we transfer from the airport to Vancouver for our final night together.

**Included meals:** Breakfast & Dinner

## DAY 9 - FAREWELL FROM VANCOUVER

Full breakfast at leisure at the hotel. You will be transferred from the hotel to meet the departure flight home that you have arranged.

**Included meals:** Breakfast

## WHAT'S INCLUDED

- Return economy flights Vancouver/ Bella Coola / Vancouver
- Meet & Greet at the airport on arrival and transfer to the hotel.
- Transfer from the hotel to the airport on the final day.
- Transport in an air-conditioned deluxe vehicle.
- Transfers as detailed in the itinerary.
- 4\* Accommodation as detailed in the itinerary.
- Meals as detailed in the itinerary.
- English speaking rangers/guides.
- Tour Director from The Big Journey Company as well as the local tour guide (subject to minimum group size being reached.)

## WHAT'S NOT INCLUDED

- Price excludes flights into and out of Vancouver.
- Drinks.
- Gratuities
- Visas, travel and medical insurance.
- Any personal items and anything not mentioned under included in price above. Any meals not mentioned in itinerary.
- Any optional activities offered.
- Any COVID tests or related entry & exit requirements

## IMPORTANT INFORMATION

- Please arrange your flights into Vancouver Airport [YVR] on Day 1 and out of Vancouver airport [YVR] on Day 9.
- Please be aware that the planes to and from Bella Coola only allow maximum 50 lbs (23 kgs) luggage per person plus maximum 25 lbs (11 kgs) carry-on. If needed, luggage can be stored at the hotel in Vancouver.
- Please let The Big Journey Company know prior to travelling if you have any medical needs or take any medication that we need to be made aware of to ensure that you have a safe and pleasant tour.
- Check in is after 2-3pm and check out is before 10am unless otherwise specified in the itinerary.
- Cancellation 90-0 days prior to departure cancellation fee is 100%. It is your responsibility to ensure the correct travel insurance in place to protect you against the need to cancel your holiday. Deposits are non-refundable.
- Further terms and conditions apply and will be provided upon request or at the time of booking. The Big Journey Company reserves the right to withdraw any offer prior to accepting a reservation request. This does not affect your statutory rights. This offer is subject to availability and space is limited.
- A non-refundable deposit of \$500 per person is due at the time of booking. Full balance will be due 14 weeks prior to departure.

## BOOK YOUR JOURNEY

*Choose from the list of dates below*

*Call to Book*

# Toll Free US and Canada: 1 (855) 342-4127

Office open: Monday - Thursday 9:00am - 8:00pm, Friday 9:00am - 5:30pm (London time). Call answered 24/7