

*Full Itinerary*

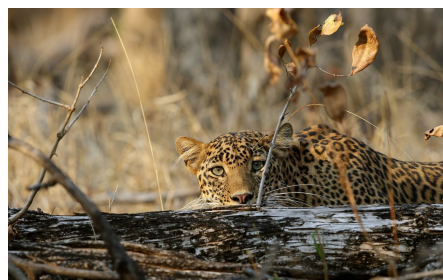
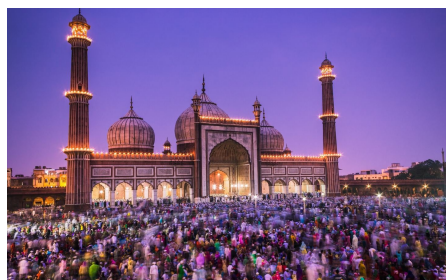
## WILDLIFE OF CENTRAL INDIA.



TALK TO OUR WELL  
TRAVELLED TEAM OF  
EXPERTS

Toll Free US and  
Canada: 1 (855)  
342-4127

Office open: Monday - Thursday  
9:00am - 8:00pm, Friday 9:00am -  
5:30pm (London time). Call  
answered 24/7



### JOURNEY SNAPSHOT

ACTIVITY LEVEL:

Level 2

DESTINATION:

WILDLIFE OF  
CENTRAL INDIA

DURATION:

10 days, 9 nights

FLIGHT INFORMATION:

Please book your flights to arrive at New Delhi's  
Indira Gandhi International Airport, India [DEL]  
on day 1 and to return from New Delhi's Indira  
Gandhi International Airport, India [DEL] on  
Day 10.

PICKUP LOCATION:

New Delhi's Indira Gandhi International Airport,  
India [DEL] on Day 1

## OVERVIEW

Choose your own departure date for your group.

Make the most of what may be one of the world's most high-profile nature success stories- travel on the trail of the Bengal Tiger and experience Wild India for yourself.

Tigers may be King of the Jungle, but this iconic species is not the only big cat to be found in India- leopards, Civets and jungle cats are at home in the National parks of India, living alongside sloth bears, wild boar, and a whole host of other animals and birds. Explore Wild India on this special interest tour, with luxurious accommodation and in the comfort of a 4X4 vehicle accompanied by a trained naturalist. Our local guides know the National Parks and Tiger Reserves of India intimately- their in-depth knowledge and expertise when it comes to the park's inhabitants ensure you will make the very most of your once-in-a-lifetime exploration.

## ITINERARY SUMMARY

**DAY 1** - Welcome to Delhi

**DAY 2** - City Tour of Delhi

**DAY 3** - Fly to Nagpur & Pench National Park

**DAY 4** - Pench National Park Jungle Safari

**DAY 5** - Pench to Kanha Jungle Safari

**DAY 6** - Full Day Jungle Safari

**DAY 7** - Kanha to Bandhavgarh Tiger Reserve Jungle Safari

**DAY 8** - Full Day Jungle Safari in Bandhavgarh

**DAY 9** - Travel to Jabalpur & flight to Delhi

**DAY 10** - Goodbye to India and Home

## FULL ITINERARY

### DAY 1 - WELCOME TO DELHI

Upon arrival at New Delhi's Indira Gandhi International Airport, India [DEL], you will be met from your flight in the arrivals lounge and transferred to your hotel, where a traditional welcome awaits! Once you have checked in, enjoy some free time before meeting up with your Big Journey Company Tour Director and your tour group for dinner together this evening and to discuss the tour ahead.

**Included meals:** Welcome Dinner

### DAY 2 - CITY TOUR OF DELHI

This morning you will be guided to the city tour of Delhi. The city consists of two parts - Old & New Delhi. Old Delhi was the capital of Muslim India between 17th and 19th century and has many mosques, monuments and forts. New Delhi, the imperial city was created by the British as the capital of India. We begin the day with an exploration starting in Old Delhi, visiting the Jama Masjid, the royal mosque built by the Mughal Emperor, Shah Jahan in 1656. It is one of the largest and most beautiful mosques in the world and is constructed in red sandstone and white marble. The main prayer hall has a seating capacity of more than 20,000 worshippers. Here we will enjoy a cycle rickshaw ride through the narrow lanes of Chandni Chowk, the spine of Old Delhi.

Later we also visit New Delhi, driving through its majestic boulevards to the Rashtrapati Bhawan, or Presidential Palace. This is where the Viceroy once lived and is now the official residence of the President of India. Today also includes a visit to Humayun's Tomb, the first great example of Mughal architecture in India. This has developed to become the hallmark of the Mughal Dynasty. The squat building of white marble and red sandstone, with a dome and high arched entrances, surrounded by formal gardens, is generally regarded as a prototype of the famed Taj Mahal of Agra. Humayun's wife is buried in the sandstone and marble tomb.

Last stop before returning to our hotel is the Sikh temple of Bangla Sahib. This magnificent and spacious bungalow in Delhi was once owned by Raja Jai Singh Amber (Jaipur). It has become a place of pilgrimage for both Hindus and Sikhs and is also known as the holy shrine "Gurudwara Bangla Sahib". The Art Gallery located in the basement has paintings depicting historical events connected with Sikh history.

**Included meals:** Breakfast Lunch & Dinner

### DAY 3 - FLY TO NAGPUR & PENCH NATIONAL PARK

Our flights to Nagpur depart early today. On arrival we will be met at the airport and transferred to Pench National Park, a journey of approximately 2 hours.

The English word 'jungle' originates from the Indian Sanskrit language. In this region, the Indian jungle offers shelter to a wide range of animals, birds and reptiles and we will see many of these creatures for ourselves - of course everyone hopes to spot the fabulous Royal Bengal Tiger, but there are also leopards, wild dogs, wolves, sloth bears, Palm civet, and porcupine, to name but a few of the species that make the parks their home. This afternoon we begin to explore the wildlife of Pench National Park.

**Included meals:** Breakfast Lunch & Dinner

### DAY 4 - PENCH NATIONAL PARK JUNGLE SAFARI

The success of the Pench wildlife reserve is attributed to the fact that there are no longer any human settlements within the reserve area. Forest villages were relocated in early 1990s and now tigers in this area are breeding so successfully that the local conservation workers are now moving some tigers to other areas of India. Here we will experience for ourselves the benefits of positive wildlife tourism, on-going scientific research and conservation with a full day of game drives with an early morning start and packed breakfast.

**Included meals:** Breakfast Lunch & Dinner

### DAY 5 - PENCH TO KANHA JUNGLE SAFARI

We enjoy an early morning safari drive today with a packed breakfast. We will return to the lodge for lunch before beginning our drive to Kanha.

The lush sal and bamboo forests, grassy meadows and ravines of Kanha National Park make for a poet's inspiration and this is the setting for Rudyard Kipling's 'The Jungle Book'. Baloo the Sloth bear, Akela the Indian Wolf and Kaa the Rock Python still make this area their home. Kanha National Park is the largest national park in central India and has been protected for wildlife since 1933. Here we will find unparalleled opportunities to photograph Indian wildlife. Kanha is also considered to be one of the best places in the world to see wild tigers.

**Included meals:** Breakfast Lunch & Dinner

## DAY 6 - FULL DAY JUNGLE SAFARI

Another full day of game drives in the local area. The exact itinerary will depend on information from the local guides- their intimate local knowledge will mean that we head to exactly the right place to see the best of what is about today. Bird watching in India is among some of the best in the world. Make sure you listen carefully to the calls around you and have your binoculars at the ready. Your local guide will be ready to point out a diverse range of life today, as we spend another full day on safari.

**Included meals:** Breakfast Lunch & Dinner

## DAY 7 - KANHA TO BANDHAVGARH TIGER RESERVE JUNGLE SAFARI

We will make the most of our opportunities in Kanha with a morning safari before checking out of our resort and beginning the drive to Bandhavgarh after lunch.

Declared a National Park in 1968, Bandhavgarh has a rich historical past. Before it was a national park, this whole area was a 'Shikargah', or game preserve of the Maharajas and their guests. In present times biodiversity is thriving and the park has more Bengal tigers than any other area of the world. We also hope to spot leopards today- there is a large breeding population here. Tigers and leopards are at the top of the food chain here, but there are many other creatures to spot. The gaur, or Indian Bison, was once extinct in the wild and has been successfully been reintroduced to Bandhavgarh National Park.

We will check into our hotel and enjoy dinner there together this evening.

**Included meals:** Breakfast Lunch & Dinner

## DAY 8 - FULL DAY JUNGLE SAFARI IN BANDHAVGARH

India is home to 13 species of monkey. Deer reputedly like to hang out with monkeys because monkeys are so noisy when there is a predator around, it gives the local deer plenty of time to make safe their escape. By now, you will be able to say whether the adage 'wherever you see a monkey, you will also find deer' is true! We will spend a full day following the advice of the local safari guides to find and observe wildlife in it's natural habitat in the Bandhavgarh National Park.

**Included meals:** Breakfast Lunch & Dinner

## DAY 9 - TRAVEL TO JABALPUR & FLIGHT TO DELHI

This morning we will spend some time at leisure before we check out of the hotel and travel to the airport at Jabalpur for our flight back to Delhi. (approx. 4 hrs)

After checking in to the hotel in Delhi, we enjoy a farewell meal together this evening.

**Included meals:** Breakfast Lunch & Farewell Dinner

## DAY 10 - GOODBYE TO INDIA AND HOME

After breakfast you will check out from the hotel and be transferred to the airport to begin your journey home.

Please arrange your flights to depart from New Delhi's Indira Gandhi International Airport, India [DEL] at any time on Day 10. Hotel check-out time is 12noon.

**Included meals:** Breakfast

## WHAT'S INCLUDED

- Internal flights included as detailed in the itinerary
- Meet & Greet at the airport on arrival and transfer to the hotel.
- Transfer from the hotel to the airport on the final day.
- Transport in an air-conditioned deluxe vehicle.
- Transfers as detailed in the itinerary.
- 4\* and 5\* Accommodation as detailed in the itinerary.
- Safari transport in 4x4 vehicles.
- National Park entry fees.
- Meals as detailed in the itinerary.
- English speaking tour guide.
- Tour Director from The Big Journey Company as well as the local tour guide (subject to minimum group size being reached.)
- All activities, visits and excursions as detailed in the itinerary.

## WHAT'S NOT INCLUDED

- International return flights to New Delhi's Indira Gandhi International Airport, India [DEL].
- Drinks.
- Gratuities
- Visas, travel and medical insurance.
- Any personal items and anything not mentioned under included in price above.
- Any meals not mentioned in itinerary.
- Any optional activities offered.
- Any COVID tests or related entry & exit requirements

## IMPORTANT INFORMATION

- Check in luggage allowance is 15 Kg and cabin bag 7 Kg per person for domestic flights to Nagpur.
- Please let The Big Journey Company know prior to travelling if you have any medical needs or take any medication that we need to be made aware of to ensure that you have a safe and pleasant tour.
- Visitor numbers to the national park are very restricted and safari permits are popular. therefore, we must close booking for this tour 140 days before the tour begins.
- Check in is after 2 - 3pm and check out is before 10am unless otherwise specified in the itinerary.
- Cancellation 90 – 0 days prior to departure cancellation fee is 100%. It is your responsibility to ensure the correct travel insurance in place to protect you against the need to cancel your holiday. Deposits are non-refundable.
- Further terms and conditions apply and will be provided upon request or at the time of booking. The Big Journey Company reserves the right to withdraw any offer prior to accepting a reservation request. This does not affect your statutory rights. This offer is subject to availability and space is limited.
- Please consult your doctor for advice on vaccinations and inoculations before travel.



## BOOK YOUR JOURNEY

*Choose from the list of dates below*

*Call to Book*

# Toll Free US and Canada: 1 (855) 342-4127

Office open: Monday - Thursday 9:00am - 8:00pm, Friday 9:00am - 5:30pm (London time). Call answered 24/7